

Confidea[®]



5075 Forsyth Commerce Rd • Orlando, FL 32807 • U.S.A.
Toll Free: 800.287.9755 • Tel: 407.658.2040 • Fax: 407.658.9433
361 W. 36TH Street, New York, NY 10018 • 212.564.6568
www.prolingo.com

Wireless conference system



Confidea DD/CD

WIRELESS DISCUSSION UNIT

Art. 71.98.0001 / 71.98.0011



Confidea DD



Confidea CD

Description

The Confidea wireless unit combines a slim, contemporary design, excellent intelligibility and ease of use with a robust and reliable wireless connection which sets it apart from traditional wireless systems.

It allows delegates of a conference to speak, request-to-speak and listen to the speaker.

The units are equipped with a microphone On/Off or request-to-speak button and have two headphone outputs with a single volume control.

The chairman unit comes with an additional priority, next-in-line and system volume adjustment button.

Battery management is crucial using a wireless conference system. Therefore Confidea units combine a smart power management with an easy to replace removeable Lithium-ion battery pack. This results in a controllable and flexible recharging shedule. (Confidea BP, to be ordered separately)

A screw lock connector is provided to connect a removable microphone which is immune against GSM disturbances (MIC 38SL, to be ordered separately).

To prevent eavesdropping and unauthorized access, the Confidea® wireless system and the discussion units have a digital encryption mechanism to keep information of the meeting confidential.

Controls and Features

- Built-in high quality loudspeaker which is automatically muted when the microphone is active, to prevent acoustic feedback.
- Microphone On/Off or request-to-speak button with two signalling LEDs
- Two headphone outputs
- One headphone volume adjustment
- The chairman version (CD) comes with a priority, next-in-line and system volume adjustment button

Status Control

- Red battery status LED
4 h remaining : 1 Hz blinking
2h remaining : 2 Hz blinking
1h remaining : 4 Hz blinking
- Blue out of range status LED
Off : connection established
Blinking : searching connection
On : out of range, shutdown after 2 min.

Connectivity

- Two 3.5 mm jack plugs for headphones
- Battery pack connection
- Screw lock socket to connect removable microphone

Specifications

Technical Data	
Audio Quality	16 bit, 32 kHz
Audio delay	max 20 ms
Power Supply	Battery pack
Dimensions	230(w), 130(h), 60(d))
Weight (g)	480
Color	RAL9011
Part number	Confidea DD 71.98.0001 Confidea CD 71.98.0011

Accessories

- Removeable microphone
MIC38SL 71.98.0050
 - Battery pack
Confidea BP 71.98.0042
 - Transport case
Confidea CHC 71.98.0044
 - Headphones
TEL151 71.04.0151
-

Confidea 2D2D

WIRELESS DUAL DISCUSSION UNIT

Art. 71.98.0022

Description

The Confidea wireless unit combines a slim, contemporary design, excellent intelligibility and ease of use with a robust and reliable wireless connection which sets it apart from traditional wireless systems.

It allows two delegates of a conference to speak, request-to-speak and listen to the speaker.

The units are equipped with two microphone On/Off or request-to-speak button and two separate headphone volume control buttons.

This dual use unit has two microphone buttons for individual microphone activation and individual delegate identification use for delegate management, speech time and camera tracking systems.

Battery management is crucial using a wireless conference system. Therefore Confidea units combine a smart power management with an easy to replace removeable Lithium-ion battery pack. This results in a controllable and flexible recharging schedule. (Confidea BP, to be ordered separately)

A screw lock connector is provided to connect a removable microphone which is immune against GSM disturbances (MIC 38SL, to be ordered separately).

To prevent eavesdropping and unauthorized access, the Confidea® wireless system and the discussion units have a digital encryption mechanism to keep information of the meeting confidential.



Confidea 2D2D

Controls and Features

- Built-in high quality loudspeaker which is automatically muted when the microphone is active, to prevent acoustic feedback.
- Microphone On/Off or request-to-speak button with two signalling LEDs
- Two headphone outputs
- Two headphone volume adjustments

Connectivity

- Two 3.5 mm jack plugs for headphones
- Battery pack connection
- Screw lock socket to connect removable microphone

Status Control

- Red battery status LED
4 h remaining : 1 Hz blinking
2h remaining : 2 Hz blinking
1h remaining : 4 Hz blinking
- Blue link status LED
Off : connection established
Blinking : low link quality
- Blue link status LED + Microphone LED
Blinking : out of range, shutdown after 2 min.

Specifications

Technical Data	
Audio quality	16 bit digital
Headphone load impedance	> 32 ohm < 1k ohm
Output power	16.5 mW / 32 ohm
Power Supply	Battery pack
Dimensions	230(w), 130(h), 60(d)
Weight (g)	460
Color	RAL9011
Part number	Confidea D2D 71.98.0022

Accessories

- Removeable microphone
MIC38SL 71.98.0050
- Battery pack
Confidea BP 71.98.0042
- Transport case
Confidea CHC 71.98.0044
- Headphones
TEL151 71.04.0151

MIC38SL

REMOVEABLE MICROPHONE

Art. 71.98.0050



Description

The removeable goosneck microphone is equipped with a screwlock connector for easy connection to the different Confidea units.

Its uni-directional response results in optimal performance even in noisy conditions.

Another important characteristic is the very low susceptibility to interference from mobile phones.

Specifications

Technical Data	
Pick-up pattern	Cardioid
Frequency response	50 Hz to 20 kHz
Sensitivity (1kHz) (free field, no load)	8 mV/Pa ± 2,5 dB
Nominal impedance	1kΩ
Min. Terminating impedance	5kΩ
Equivalent noise level A-weighted (DIN IEC 651)	26 dB
CCIR-weighted (CCIR 468-3)	36 dB
Max. SPL (1kHz)	133 dB
Connection	screwlock
Length	380 mm
Weight	±68g
Finish	Matt black, scratch resistant
Part Number	71.98.0050

Confidea BP

BATTERY PACK

Art. 71.98.0042



Description

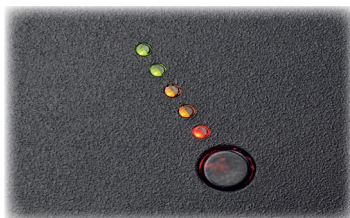
The high capacity Lithium-ion rechargeable battery pack provides power to the wireless Confidea units.

Lithium-ion rechargeable cells have a long lifespan as they do not have charging degradation issues associated with other rechargeable battery types.

The smart battery pack is monitored and controlled via a built-in microcontroller which monitors the recharging process and prevents overloading.

Fully loading an empty battery takes about 4h and guarantees an autonomy of 20h for typical use.

At the bottom of the battery pack a test button can be pushed to check the remaining charge which is visualised via a led bar for about 3 seconds.



After the remaining charge indication the battery status is visualised. The status code is visualised with a combination of active leds.

Controls and Features

- Battery status LED
- Power adapter connected LED
- Charging LED
- Push-to-test button
- LED bar for capacity and status indication

Accessories

- Charging tray :
Confidea CHT 71.98.0043
- Battery charger :
Confidea BPC 71.98.0040

Specifications

Technical Data	
Output voltage	7.2 VDC
Capacity	6600 mAh
Autonomy	20 h
Charging time	4 h
Dimensions (mm)	170 (w), 75 (h), 25 (d)
Weight (g)	377
Color	RAL9011
Part Number	71.98.0042

Confidea WCAP+

WIRELESS CONFERENCE ACCESS POINT

Art. 71.98.0031



Description

The Confidea Conference Access Point+ is the heart of Televics Confidea® system.

The wireless conference system uses the 2.4 and 5 GHz frequency range, providing a large number of channels to guarantee a reliable wireless link at any time.

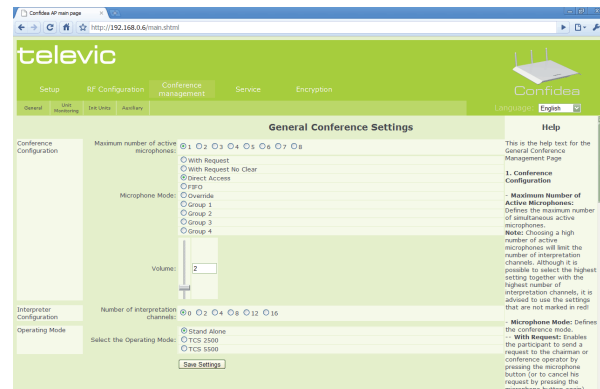
The access point has three antennas, two transceiver antennas for diversity and a third antenna that constantly scans the band to identify interference sources. This way, the access point is able to automatically choose a 'clean' frequency resulting in a reliable link.

The data exchange between the access point and the wireless discussion units is digitally protected ensuring a secure system.

A single access point has a range of 30m. This range is extendible adding additional access points.

For basic discussion and voting applications the access point can be used in a stand alone mode, acting as a central control unit.

Simply by browsing to the internal webserver, configuration and setup of the wireless system can be performed. Most common used web browsers are supported (IE, Firefox, Google Chrome)



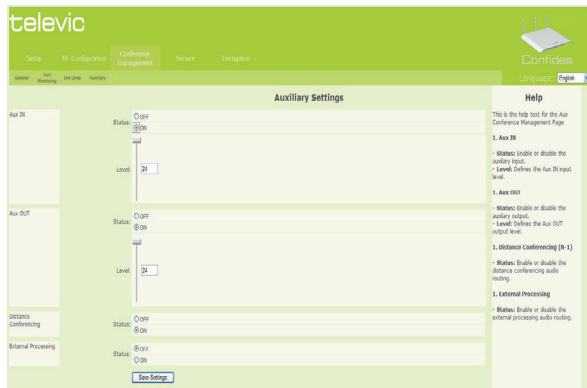
During the meeting status information like radio link quality and the battery condition of each unit can be checked.

Unit Monitoring						
Units Initialized: 2						
Units in Init List: 2						
Summary:						
Microphone Number	Serial Number	Status	Link Quality	Battery Status	Version	
0001	0x00000026	connected	fair	12h	01.09.000	
0002	0x000001A1	connected	good	18.6h	01.09.000	
0003	0x03F00001	connected	fair	18.6h	01.08.002	
0004	0x00000047	connected	fair	0h	01.09.001	

Another great advantage of the WCAP+ is the availability of analog input and output. So for basic systems no additional central equipment is needed to connect the system to an external public address system or to add an external signal to the conference system.



Additionally it is possible to connect the access point to a video conferencing system by activating the distance conferencing (N-1) function preventing feedback.



Activating the external processing allows to add external signal processing equipment or a mixing board.

Finally the standalone wireless system can be controlled via the Confidea CS software suite. It offers basic functions for microphone management, synoptic control and voting management.

Simultaneous interpretation and more advanced discussion or voting applications (synoptical view, voting result logging, I/O peripherals...) require connection to a central control unit.

Following the Televic family concept the access point can be connected to any central control unit with the corresponding software suite.

In total the Confidea® system can handle up to 16 translation channels and up to 8 open microphones.

Confidea® can also be used to temporarily or permanently expand an existing wired installation. By connecting the WCAP to the installed Televic central unit, a number of wireless units can be added creating a hybrid conference system.

Connectivity

- Power connector
- RJ45 LAN connection
- RJ45 in from central control unit
- RJ45 out to next access point (if needed)
- 6.3 mm jack balanced analog in
- 6.3 mm jack balanced analog out
- Two overload activity LEDs
- 3 R-SMA antenna connectors

Specifications

Technical Data	
Power Consumption	6 W
Mounting	Table Wall Floorstand
Dimensions (without antennas)	260(w) x 230(h) x 38(d)
Weight (g)	1220
Colour	RAL 7035
Housing	Metal
Part number	71.98.0031

Accessories

- Confidea APPS 71.98.0041
Access point power supply needed in standalone mode
- Digital bus cable, Cat5 24AWG:

2m ICC5/2	71.60.4002
5m ICC5/5	71.60.4005
10m ICC5/10	71.60.4010
20m ICC5/20	71.60.4020
- Confidea CS Software suite

Confidea CHT

CHARGING TRAY

Art. 71.98.0043



Description

The Confidea Charging Tray is a rack-mountable device of 3 U high that can recharge 6 Confidea Battery Packs at once.

It has an auto-ranging power supply and a loop-through mains connector.

Maximum 4 chargers can be daisy-chained for 110 VAC regions and 8 for 220 VAC regions.

It is designed for multiple mounting possibilities, having 19" rack, wall or table mounting capabilities.

Features

- Loop-through mains connector
- 6 slots for 1 Confidea Battery Pack each
- 19" rack mountable

Specifications

Technical Data	
Power Supply	110 - 230 VAC +/- 10%
Power consumption	200 W
Dimensions	483(w) x 132.1 (h) x 139.5(d)
Weight (g)	3750
Color	RAL9011
Part Number	71.98.0043